

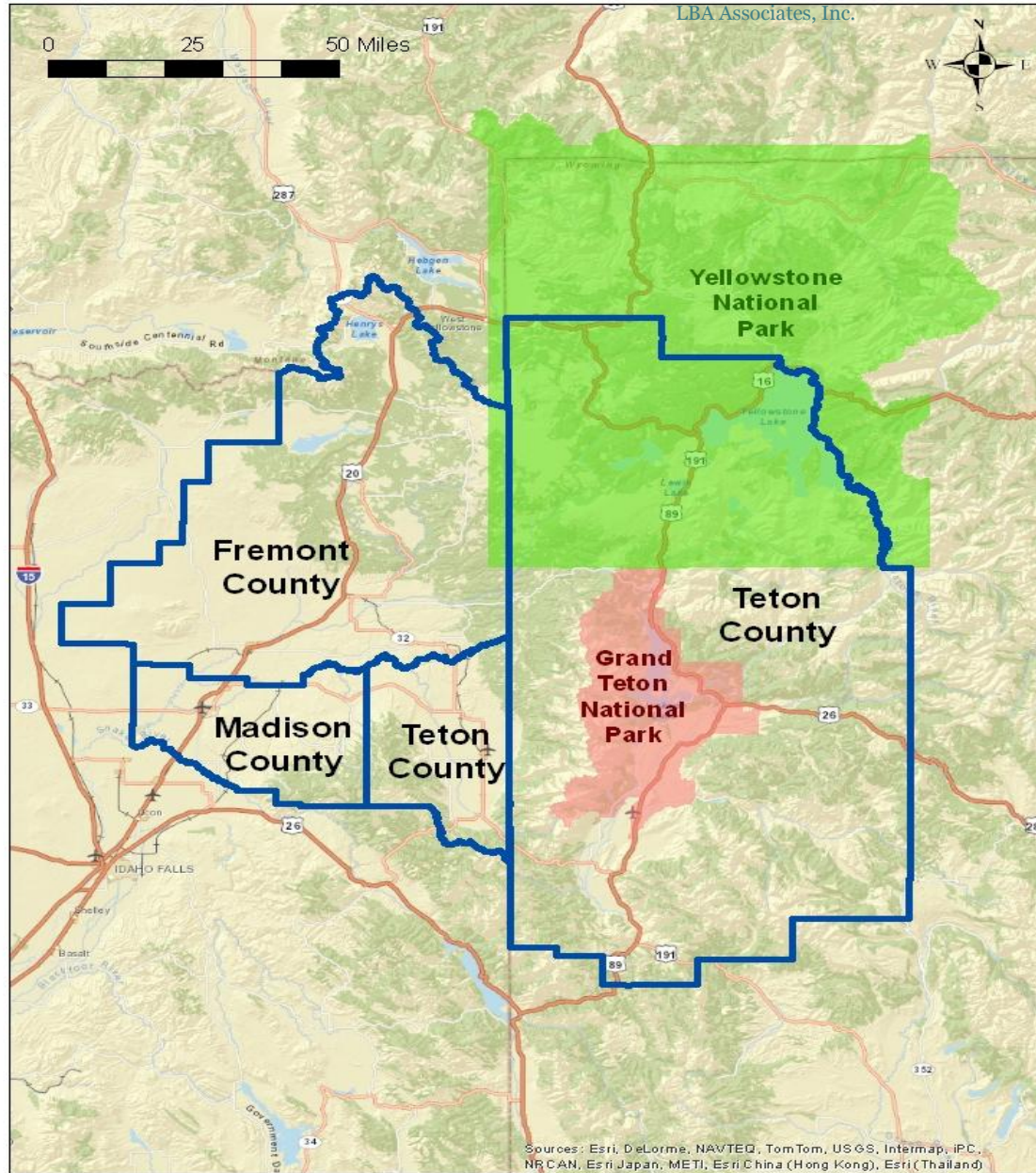
WGYC's REGIONAL RECYCLING STUDY

INITIAL STAKEHOLDER
MEETING
JULY 18, 2013



LBA ASSOCIATES

*Prepared
by Greg
Newkirk,
Fremont
County*





*Teton Science School Day Camp/Teton Valley
Community School – Recycled Art, Summer 2012
(Teton County, ID , courtesy Jennifer Zung)*

Teton / Madison / Fremont and Teton, WY
Counties

Current Solid Waste & Diversion Conditions

2010 Population Densities

- Teton County **23** persons/mi²
- Madison County **80** persons/mi²
- Fremont County **7** persons/mi²
- Teton County, WY **5** persons/mi²

Local Transfer Station/Landfills (costs for MSW only)

- Teton County Transfer (Circular Butte)
 - **\$66/ton tip fee + \$105 waste user fee**
- Madison County Transfer (Circular Butte)
 - **\$60/ton tip fee + \$25 waste user fee**
- Fremont County's St. Anthony & Island Park LFs
 - **\$0 tip fees for MSW + \$110 waste user fee**
- Teton County, WY Transfer (Bonneville Cty)
 - **\$110/ton tip fee & SPET tax**

Materials Diverted

	Teton	Madison	Fremont	Teton, WY
Cardboard	X	X	X	X
Paper	mixed	ONP, mixed	ONP, OMG, WP	ONP, OMG, OP, OTDs
Plastic	#1, #2 bottles	#1, #2 bottles	#1-#7, bags	#1, #2 bottles, bags
Glass	use at LF	X		X
Aluminum/Tin Cans	X	X	X	X
Scrap Metal	X	X	X	X
Organics	YW, clean wood, manure, mortalities			YW, clean wood
E-Waste	X	X	X	X
Hazardous/Universal	X	X	X	X
Tires	X			X
C&D	asphalt pavement			concrete, clean fill

Current Generation & Diversion Levels

	Teton	Madison	Fremont	Teton, WY
Landfilled Tons	5,900 MSW	22,000 MSW	5,000 MSW	24,000 total waste
Diverted Tons	1,100	400 excl hauler tons	800	12,000 incl organics
Waste Generation (lbs/person-day)	3.6 MSW	NA	2.0 MSW	9.0 total waste
Diversion Rate	15%	NA	17%	34%

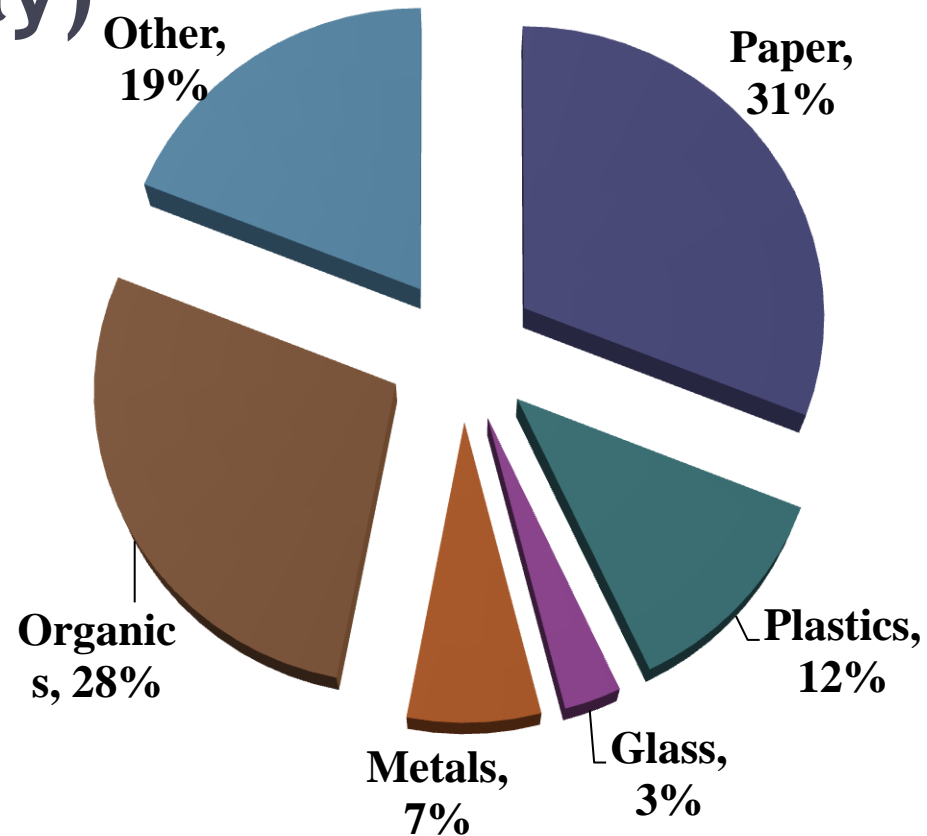
Based on data provided by counties - may exclude private hauler information

Potential MSW Diversion Levels (WGYC counties only)

*Based on Assumed 50%
Diversion of Targeted
Recyclables & Organics Only*
(tons/year)*

	2020	2030
Recyclables	37,000	45,000
Organics	19,000	23,000
TOTAL	56,000	68,000

** Overall diversion rate
approximately 35%*



*Assumed waste composition for rural
communities (Wyoming Solid Waste
Diversion Study, 2013)*



City of Rexburg curbside containers

Teton / Madison / Fremont and Teton, WY
Counties

Existing Diversion Challenges

Existing (General) Challenges

- Low population density - mostly drop-site collection
- Lack of drop site access/convenience for all users
- Lack of local and state diversion policy
- No economy of scale – low tons & high unit costs
- Distant markets – high transportation costs
- Limited market leverage

Local Challenges from Stakeholders

- Trash burning and illegal dumping
- Lack of tip fees/fees don't encourage separation
- Low MFU, commercial & institutional diversion
- Lack of collection & processing infrastructure
- No ability to sort commingled recyclables or process commingled organics
- No food waste composting
- Limited glass, mulch, compost, C&D markets



Teton / Madison / Fremont and Teton, WY
Counties

Potential for Broader Regional Diversion

Regionalize, Regionalize, Regionalize

- Value
 - **To provide generators with consistent programming**
 - **To increase tons & reduce unit costs**
 - **To improve creative solutions**
 - **To increase market leverage**
- Potentially include
 - **Idaho – Bonneville, Jefferson, Clark?**
 - **Montana?**

Expand Beyond the 4 Counties?

*Based on Assumed 50% Diversion of all Potential Materials
additional Idaho counties only (tons/year)*

	2020		2030	
	WGYC	Total	WGYC	Total
Recyclables	37,000	91,000	45,000	103,000
Organics	19,000	46,000	23,000	53,000
TOTAL	56,000	137,000	68,000	156,000

Potential Options for Meeting Challenges on Regional Level

1. Commingled/Single-Stream Recyclables Processing Capability
 - **Increase materials – plastics, paperboard**
 - **Increase curbside collection options**
 - **Increase tons but maximize recovery**
 - **Increase MFU, ICI diversion**
 - **Separate glass collection?**
2. Market Access – rail?
3. Compost – county or regional? food waste?
4. Mobile processing – wood (tires, concrete)

“Solutions” (con’t)

1. Policies to increase diversion
 - **Single-stream collection w/wo glass**
 - **Volume-based trash pricing**
 - **Bundled trash & recycling**
2. C&D Diversion
 - **Higher fees for mixed loads at TS/LF**
 - **Refundable deposits for diversion (C&D plus)**
 - **Market development**
3. Leverage/Formalize Vendor Relationships
4. Strategies for New/Expanded Local Markets (glass, plastics, compost, C&D, etc.)



Photo from www.tetonwyo.org/recycl

Teton / Madison / Fremont and Teton, WY
Counties

Discussion Topics for July Consortium Meeting

Discussion Topics

- Additional diversion challenges - ?
- Additional solutions - ?
 - **Infrastructure and equipment**
 - **Programming – collection, education**
 - **Policy**
- Wisdom of expanding beyond 4-county area?
- Other?

Next Steps

- Improve available data – stakeholders
- Confirm & screen list of potential regional solutions – LBA
- Collective stakeholder input to prioritize solutions – all
- Analyze priority solutions and develop implementation plan – LBA
- Stakeholder meetings to review

Team Contacts

- Laurie Batchelder Adams
 - laurie@lbaassoc.com
 - 303-733-7943
- Julie Klein
 - julie@confluencesustainability.com
 - 720-271-5173
- Jennifer Zung
 - jnzung@harmonydesigninc.com
 - 208-354-1331



LBA ASSOCIATES